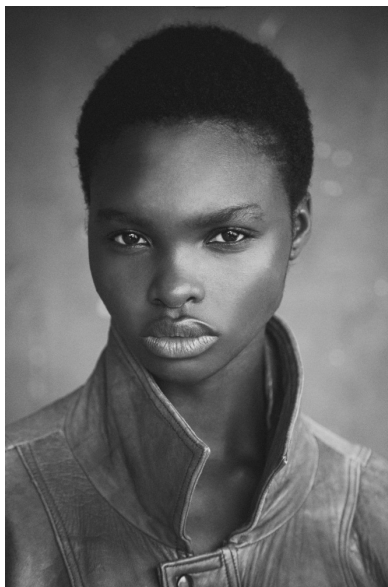


A close-up portrait of a young Black woman with short, dark hair, looking directly at the camera with a neutral expression. She is wearing a dark red or maroon blazer. The background is blurred, showing an outdoor setting with some greenery and a building.

AWORO MAYOWA

ICONIC

ICONIC



AWORO MAYOWA

HEIGHT
176 CM
5' 9½"

BUST
79CM
31"

WAIST
56CM
22"

HIPS
87CM
34½"

SHOES
38EU
7US

HAIR
BLACK

EYES
BROWN